

# Deadlywind DTI4 Tactical body installation instructions.

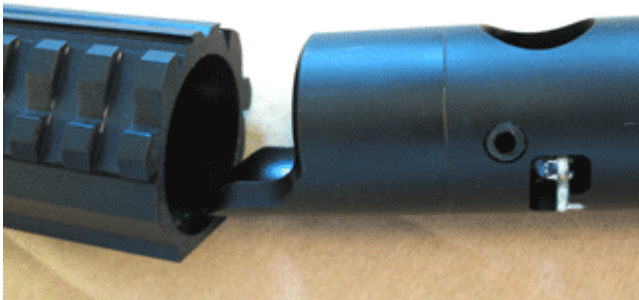
## For ION XE.

Doc. Version 1.0 –June 2009

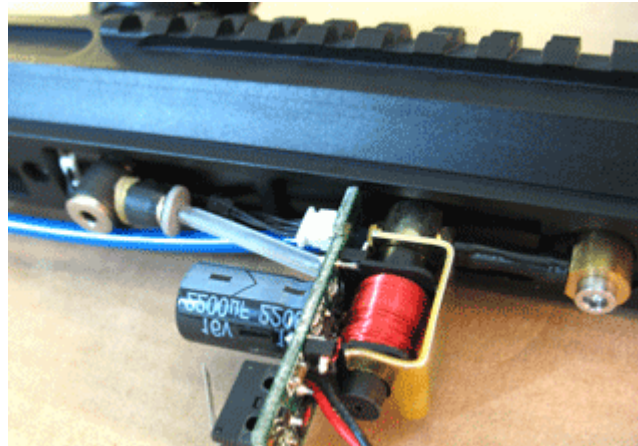
- 1: Disassemble the Ion XE. Please refer to your Ion user's manual if you need help with this. Slide the plastic body sleeve off of the internals.



- 2: Slide the Ion XE "guts" (the Breach and Fire Can) into the DTI4 shell. Slide it in until the feedneck holes align up. You should also see the holes align on the bottom.



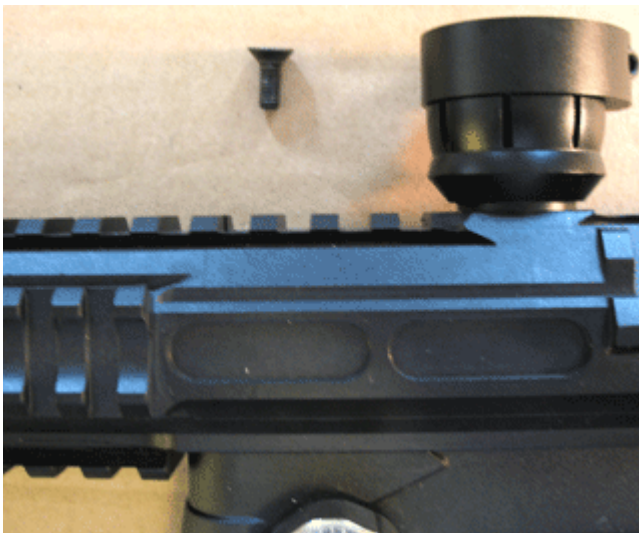
3: Re-assemble the Ion hoses back to the underside through the body. Attach the ACE wire, the front plastic banjo (or QEV if you are using one), and the rear brass Ion XE 90\* air fitting. This air fitting should fit through the larger hole in the DT14 body shell and thread into the Ion XE Fire Can as it normally would.



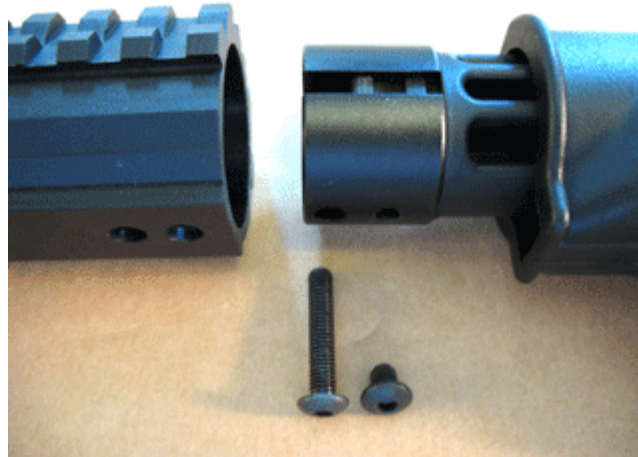
13: re-assemble the body back onto the trigger frame (do not forget to connect the long front air hose to the air supply banjo in the grip frame).



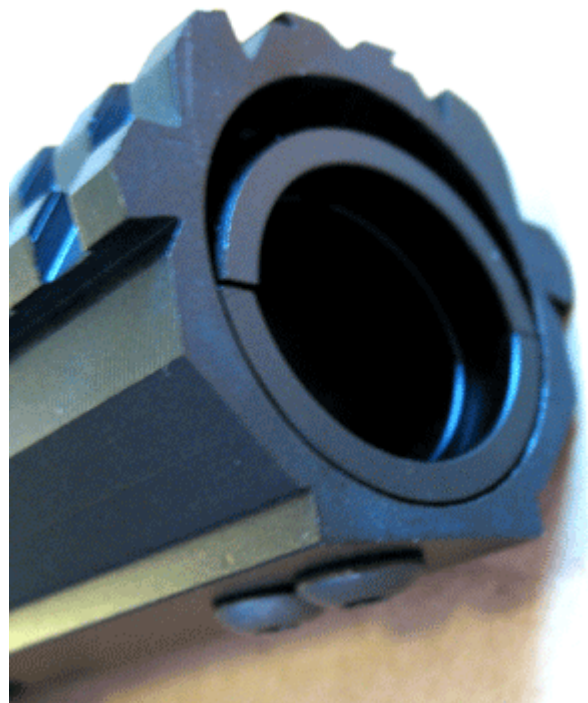
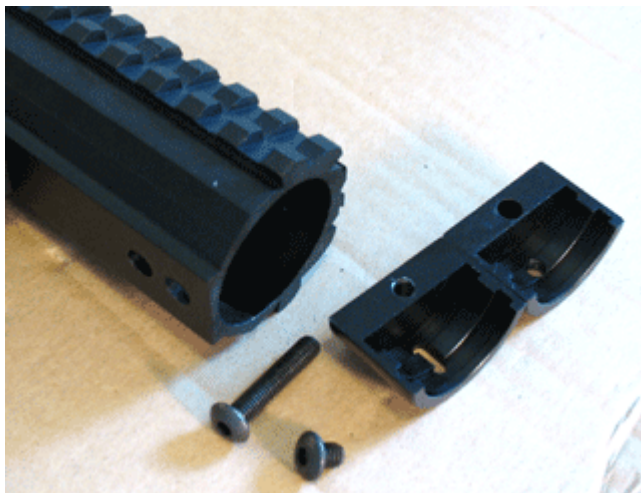
15: Do not forget about the very front trigger frame screw. It is a bit tricky to get in there, but it is possible with a little work. You will need to place the screw into position via the front of the body, or through the feedneck opening. There is an access hole in the body to get your Allen wrench through to access this screw.



16: To install your M98 style shoulder stock, locate the two M98 clamping halves. One has a slot cut in it-- that is the "top" half. Place each half on your M98 shoulder stock as shown in the following picture. Slide this into the back of the DTI4 body, and secure with the two screws included. The long screw goes through the forward hole in the body and clamps the two halves together, and the short screw goes through the rear hole in the body and helps to keep the clamp from moving around.



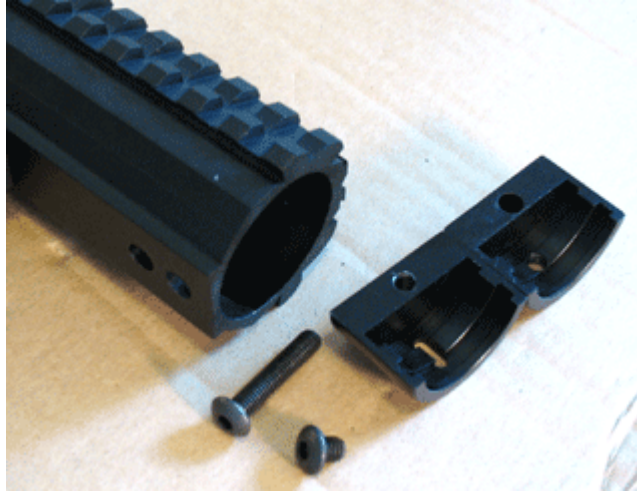
Otherwise, if you do not have a shoulder stock to use, you should still install the M98 clamping halves to cover up the open end of the body shell.



## Bolt Removal.

To access the Ion XE bolt system, take the following easy steps:

1: Remove the M98 shoulder stock adaptor clamp halves (and Shoulder stock if you have one installed).



2: Insert the large 5/16" Allen wrench (included with your Ion tools kit) into the tail of the Ion XE and unscrew the Bolt Assembly out the back.



3: To re-install, simple reverse the removal steps.